

3D Measurement System **OWL**

Software Install Manual

- Installed software runs on Windows 7, 8 and 10. Also, obtain .NET Framework required for the software from the Microsoft web site, install it in advance.
- The Images used in this manual were taken with Windows 10 (some Windows 8). If you install OWLManager on a different version Windows, read this manual according to your version.

How to Install Software

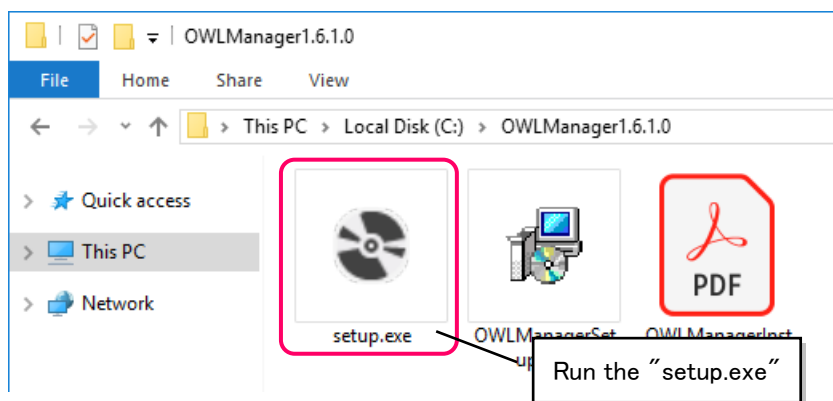
The following shows how to install a software.

This manual describes the case of installing OWL dedicated software "OWLManager". If you want to install other software, read this manual with replacing with the software that you want to install.

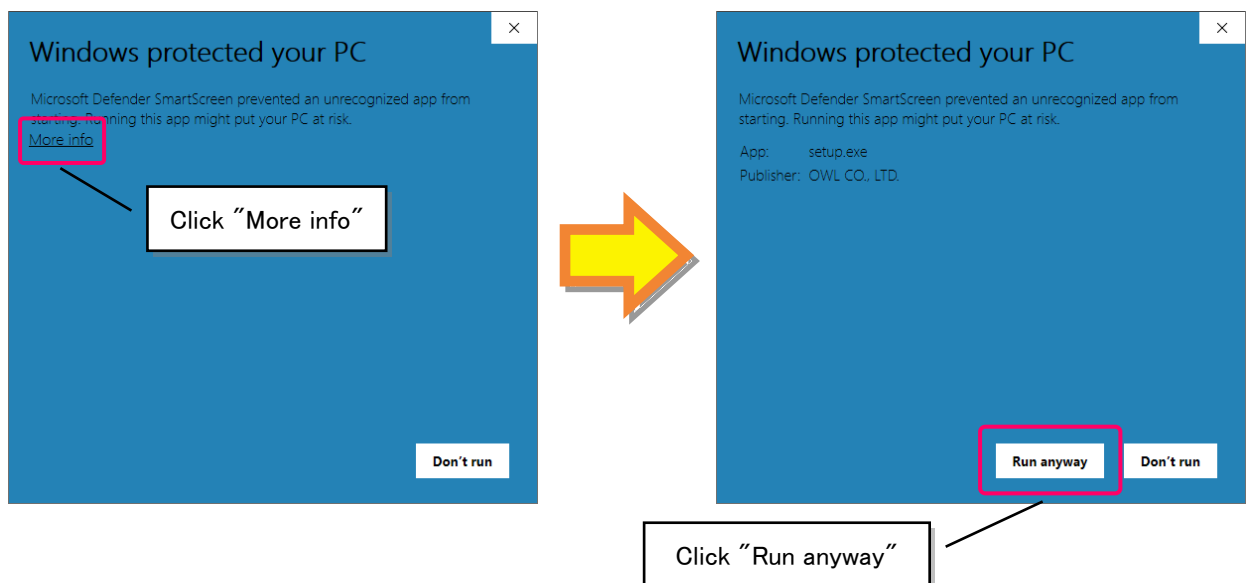
- ① Save the folder containing the software that you install to any location on your computer. If the folder is compressed (in the case of zip file), unzip it.

If you downloaded OWLManager from the OWL site, save and unzip the "OWLManager xxxx.zip" file.

- ② Run the "setup.exe" file in the saved folder.

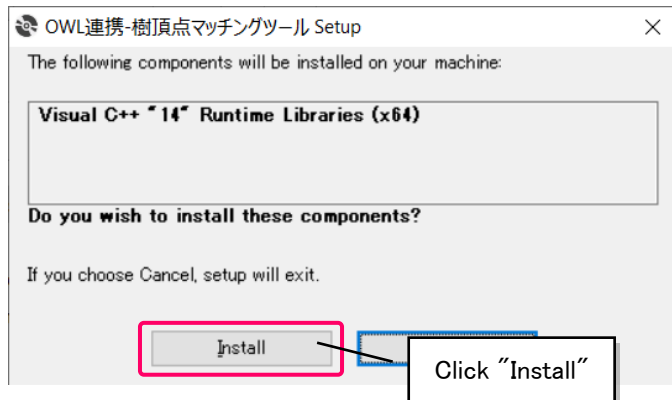


If you see the message "Windows protected your PC" after double-clicking "setup.exe", click "More info" and then click the "Run anyway" button to continue the installation.

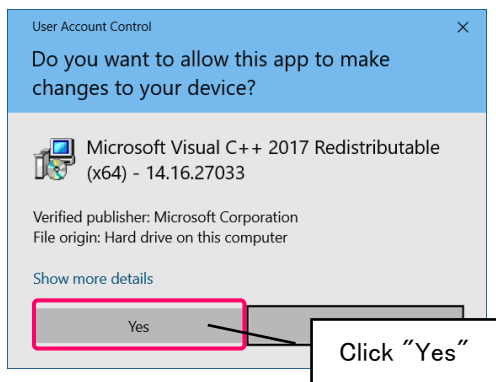


3D Measurement System OWL

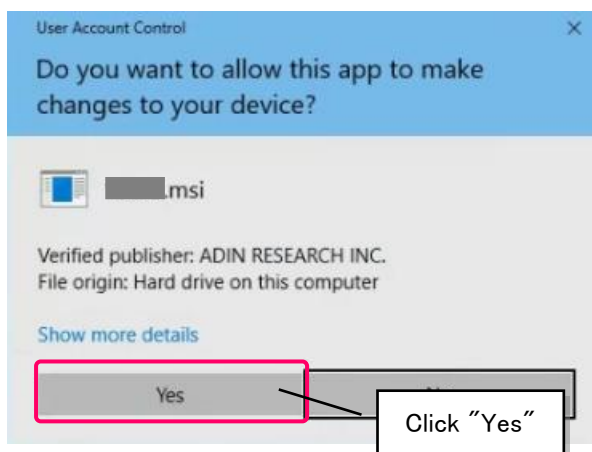
- ③ If the files required by the software are not installed, the following message will be displayed. Click "Install" if the following message appears.



Click "Yes" if the message "Do you want to allow this app to make changes to your device?" appears after clicking "Install".

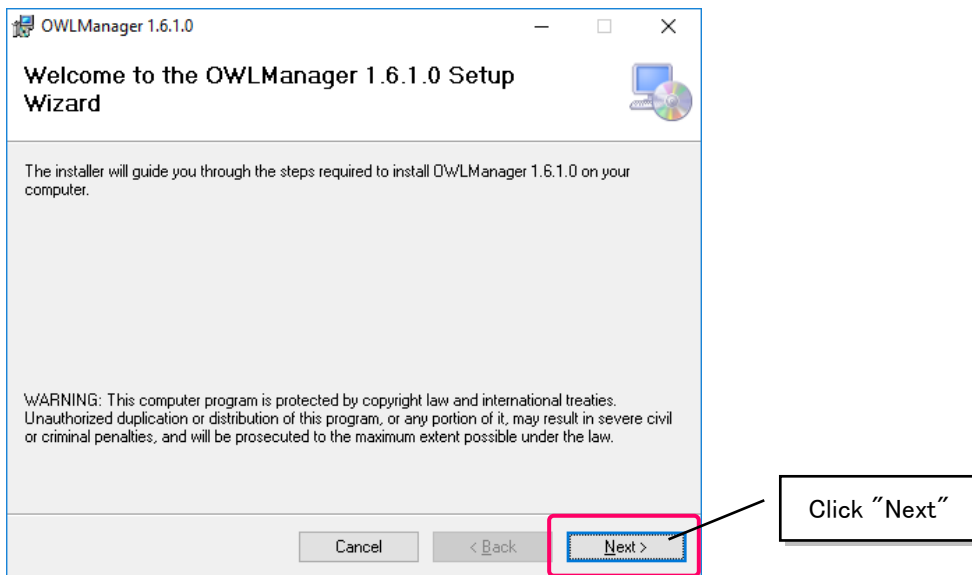


- ④ Click "Yes" if the message "Do you want to allow this app to make changes to your device?" appears.



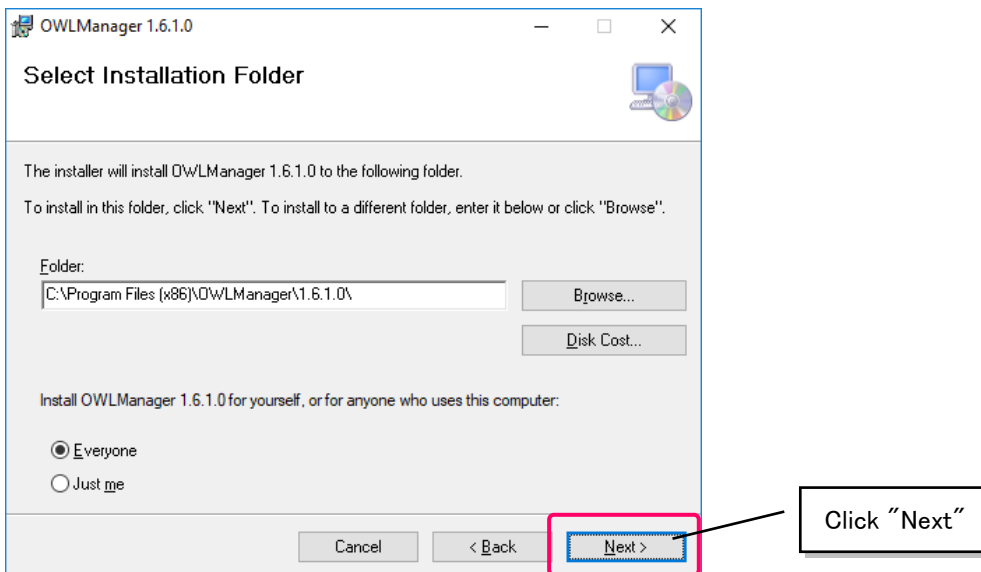
3D Measurement System OWL

- ⑤ Click "Next" if the Setup Wizard appears.



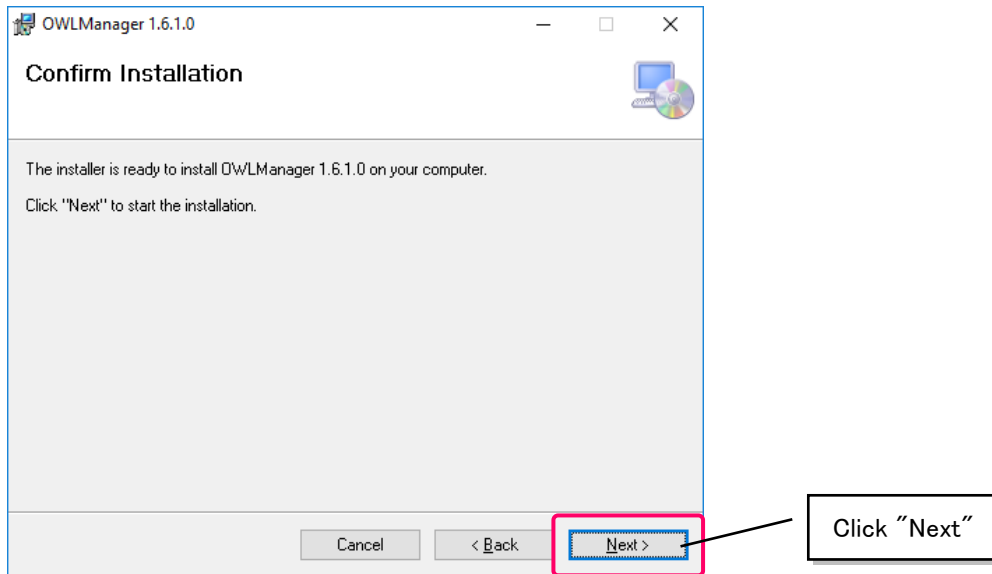
- ⑥ Select the install folder.

If there is no problem with the location and user selection, you can leave the default.

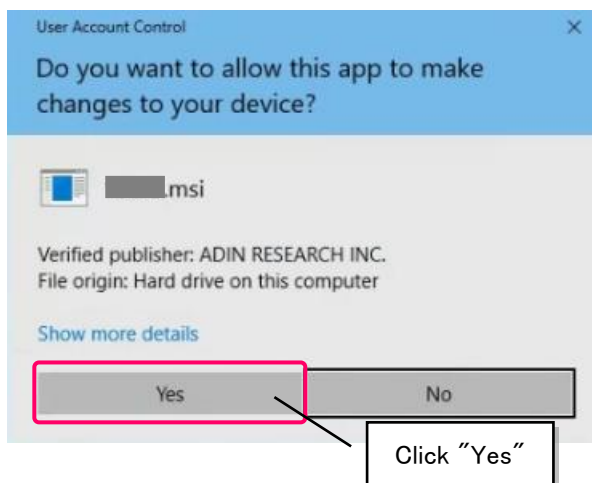


3D Measurement System OWL

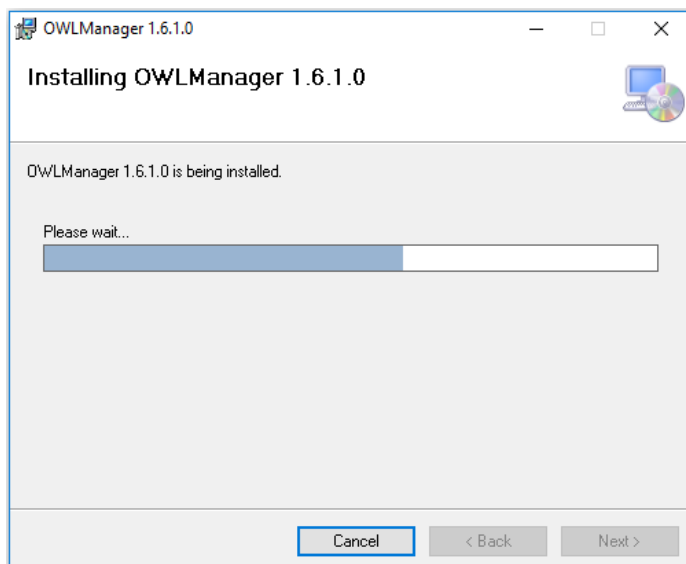
- ⑦ The install confirmation screen appears. Click "Next".



- ⑧ Click "Yes" if the message "Do you want to allow this app to make changes to your device?" appears.

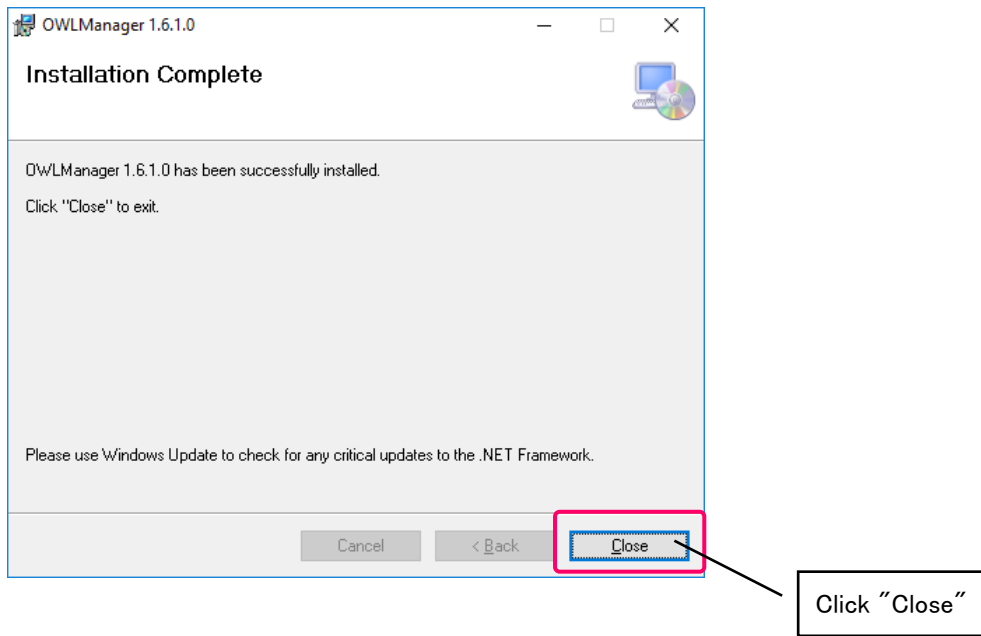


- ⑨ Install begins. Please wait for a while.

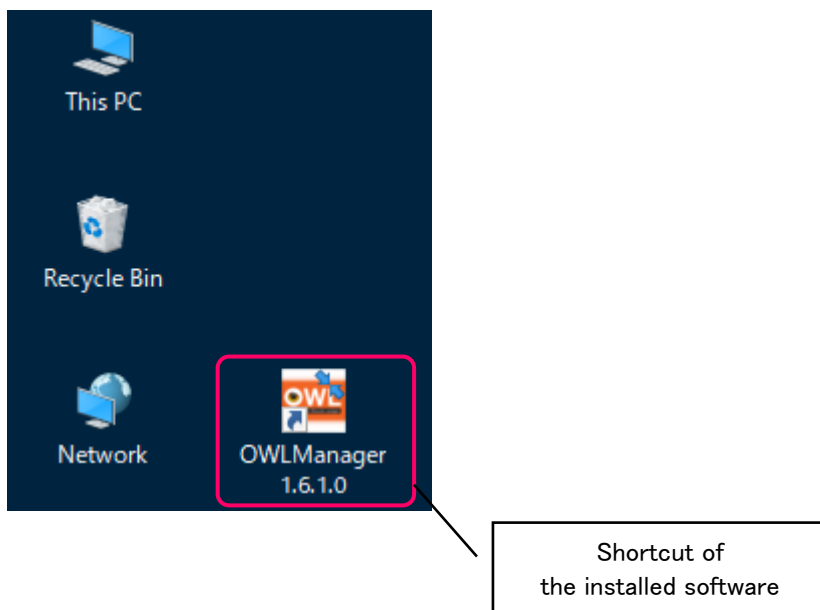


3D Measurement System OWL

- ⑩ When the install is completed, the following screen appears. Click "Close".



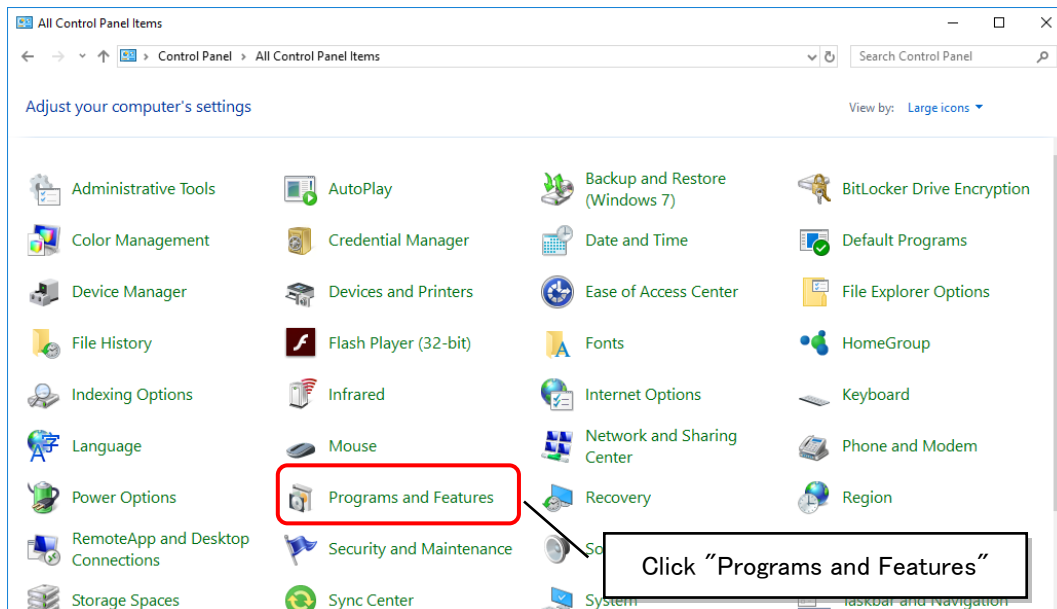
- ⑪ When the install is completed, a shortcut is created on the desktop.



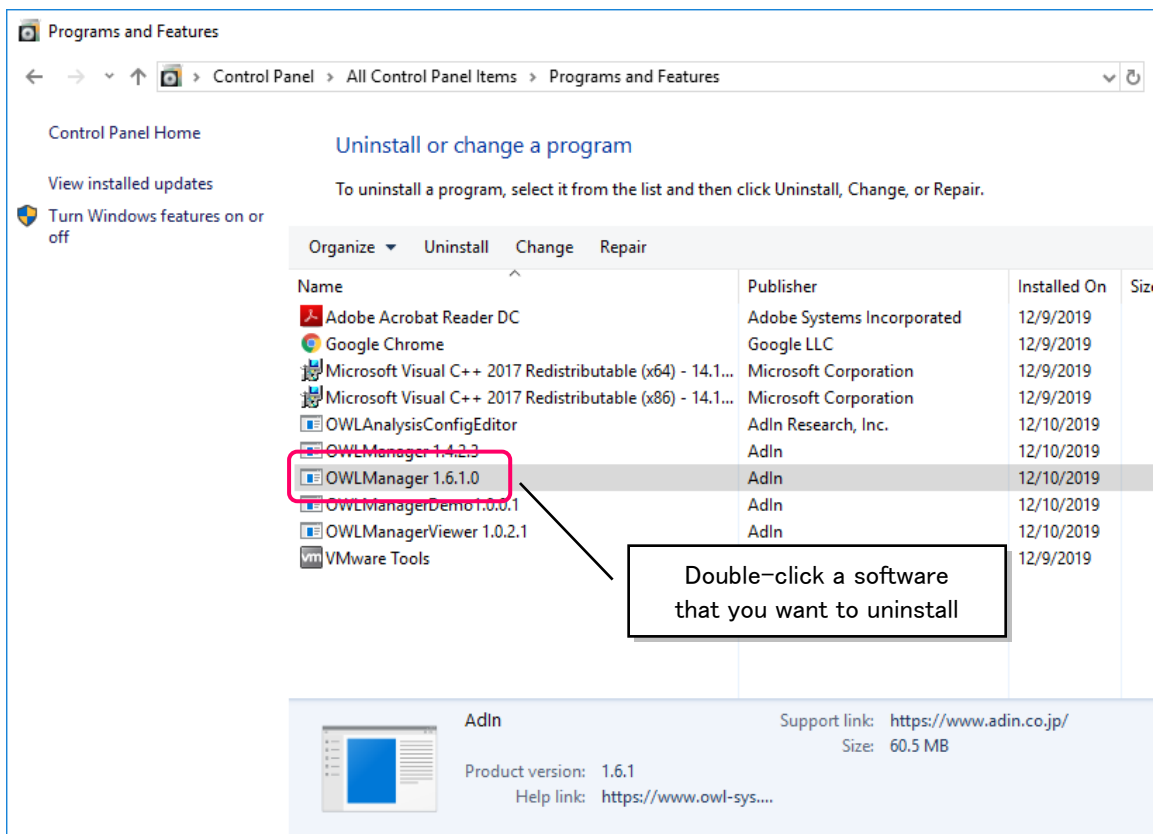
How to Uninstall Software

When uninstalling an installed software, do it from "Control Panel" – "Programs and Features".

- ① Select "Programs and Features" from the Control Panel.

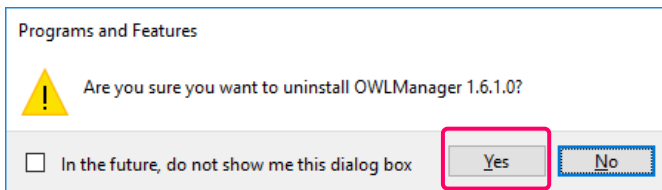


- ② Double-click a software that you want to uninstall.

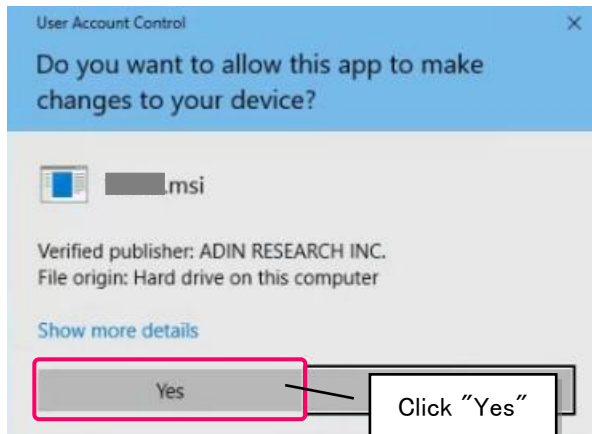


3D Measurement System OWL

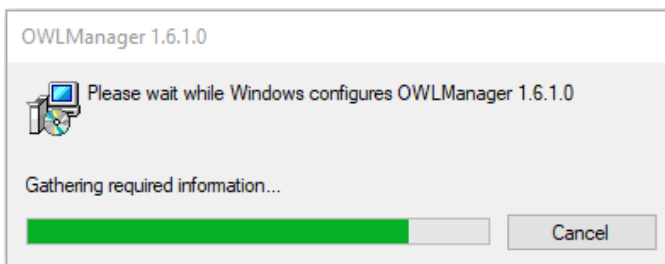
- ③ Click "Yes" if the following confirmation message appears.



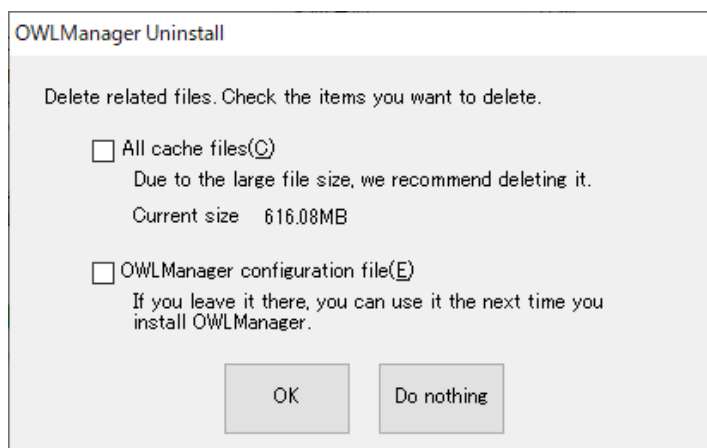
- ④ Click "Yes" if the message "Do you want to allow this app to make changes to your device?" appears.



- ⑤ The following message appears and uninstall will begin. When the message disappears, uninstall is completed.



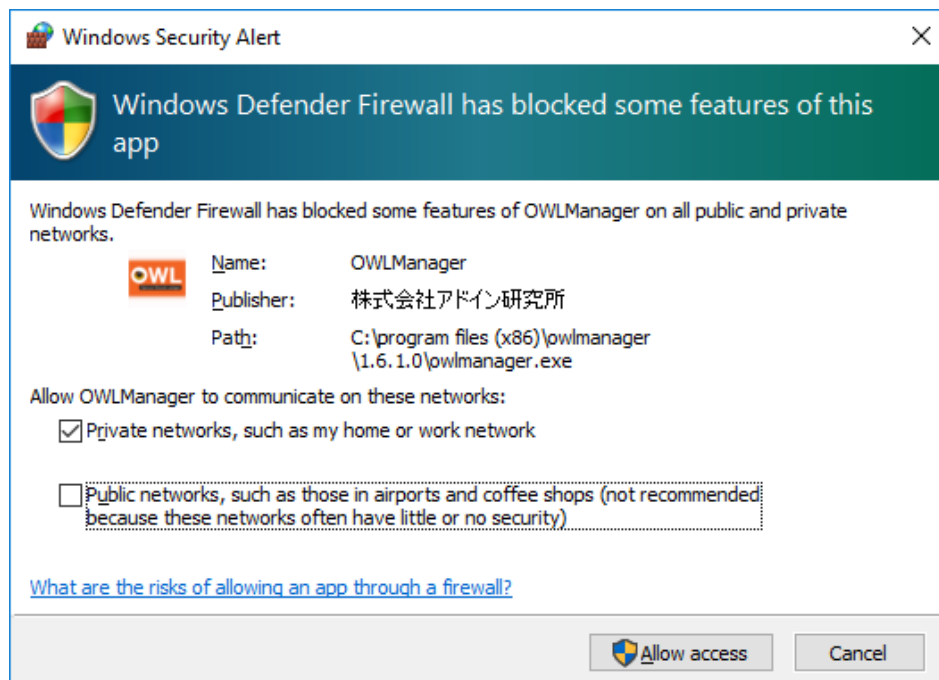
If you uninstall OWLManager of version that is 2.1.1.0Beta or later, the following window will be displayed during the uninstallation process and the uninstallation process will be interrupted.



If you click "OK" after checking the files you want to delete in this window, the checked files will be deleted. On the other hand, if you click "Do nothing", the files displayed in this window will not be deleted, regardless of whether they are checked or not. If you click either button, the uninstall process will be resumed.

First time when using OWLManager

If you are using OWLManager for the first time, you may see a message as follows. (The following image is a display example on Windows 10) In this case, click "Allow access" button.



The same warning will appear when you use the feature called Walk-through of standing tree for the first time. Click "Allow access" button again in this case.

※ OWLManager does not access external servers or programs, but it communicates with the Walk-through program internally which causes displaying the warning message like this.

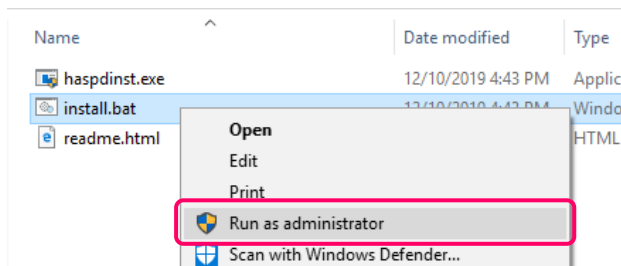
How to install HASP Driver

To use an installed software, you need a USB type hardware key (HASP key) made by the Sentinel company.

You may also need driver software depending on your Windows version.

If the LED does not turn red when inserting the HASP key into the USB port or OWLManager does not start, install driver software according to the following steps.

1. Remove the HASP key if it is inserted into the USB port.
2. Right-click "install.bat" file in the HASP key driver folder and select "Run as administrator" from the popup menu.



3. Click "Yes" if the message "Do you want to allow changes to this computer?" appears. (Select the direction to proceed if you receive any other messages)
4. The Message "Please wait" appears and install begins. After a while, the message "Operation successfully completed" appears, so click the "OK" button.
5. Insert the HASP key and check if the LED lights up. If it lights up, installation is complete.

※If "Please wait" is not appeared, double-click "install.bat" to execute it.

OWL Co., Ltd.

TEL: +81-3-6823-7138 MAIL: owl@owl-sys.com

Forest 3D measurement system OWL: <https://www.owl-sys.com/>

MS- AS1-OL000-A06-E
